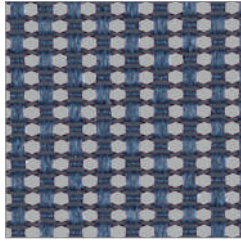


**HermanMiller**  
Cosm colour choices



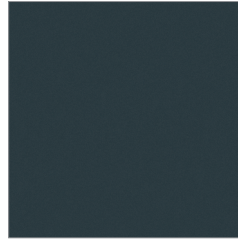
# Cosm Chair

**Suspension**  
Intercept  
Price Band 1



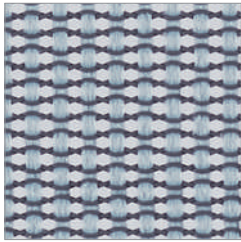
Nightfall  
84504

**Nightfall Frame**  
Finish



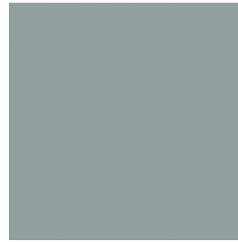
Nightfall  
DN2

**Suspension**  
Intercept  
Price Band 1



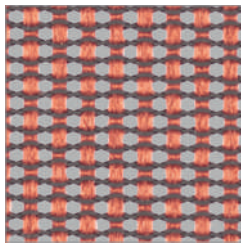
Glacier  
84505

**Glacier Frame**  
Finish



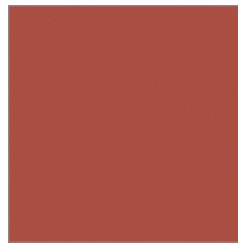
Glacier  
DB3

**Suspension**  
Intercept  
Price Band 1



Canyon  
84506

**Canyon Frame**  
Finish



Canyon  
DR1

**Suspension**  
Intercept  
Price Band 1



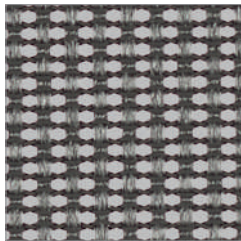
Graphite  
84501

**Graphite Frame**  
Finish



Graphite  
G1

**Suspension**  
Intercept  
Price Band 1



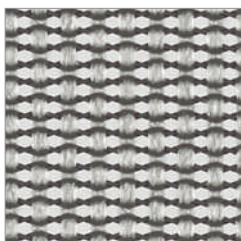
Carbon  
84502

**Carbon Frame**  
Finish



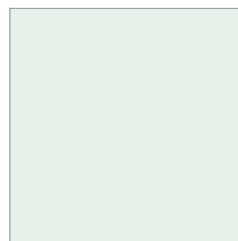
Carbon  
CRB

**Suspension**  
Intercept  
Price Band 1



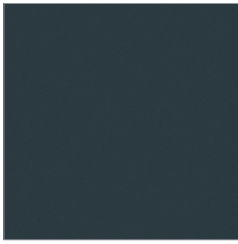
Mineral  
84503

**Studio White Frame**  
Finish



Studio White  
98

**Chassis/Base**  
Finish



Nightfall  
Nightfall  
DN2/DN2



Nightfall  
Semi-Polished  
DN2/5Y

**Chassis/Base**  
Finish

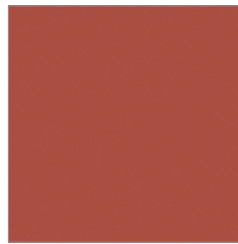


Glacier  
Glacier  
DB3/DB3



Glacier  
Semi-Polished  
DB3/5Y

**Chassis/Base**  
Finish



Canyon  
Canyon  
DR1/DR1



Canyon  
Semi-Polished  
DR1/5Y

**Chassis/Base**  
Finish



Graphite  
Graphite  
G1/G1



Graphite  
Semi-Polished  
G1/5Y



Silver Alloy  
Semi-Polished  
L7/5Y

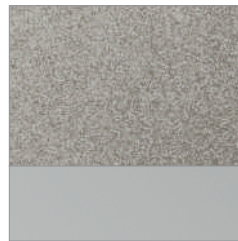
**Chassis/Base**  
Finish



Carbon  
Carbon  
CRB/CRB

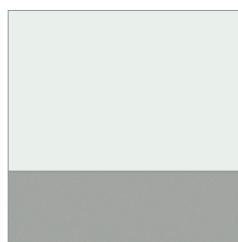


Carbon  
Semi-Polished  
CRB/5Y

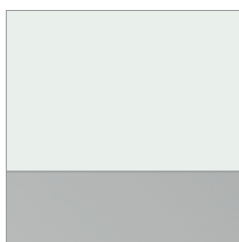


Silver Alloy  
Semi-Polished  
L7/L7

**Chassis/Base**  
Finish



Studio White  
Mineral  
98/VPR



Studio White  
Semi-Polished  
98/5Y



Silver Alloy  
Semi-Polished  
L7/5Y

## Intercept

### Composition:

Elastomeric 60%, Polyester 40%

### Application:

Weight: 38.3 ounces/Linear yard

### Standards:


Flammability: CA TB 117, NFPA 260

Light Fastness: Grade 4, 40 hours

Abrasion: Wyzenbeek, 200,000 double rubs

Maintenance: Vacuum regularly. Wipe clean with a damp cloth.

**For more information, please visit [hermanmiller.com](http://hermanmiller.com) or call +44 (0)845 226 7201.**

Colour samples are limited by the printing process and are indicative only.  
Herman Miller and  are registered trademarks of Herman Miller, Inc.

© 2018 Herman Miller Ltd, Chippenham, Wiltshire PB2276  
All rights reserved